

# Standard Inch Series Bores And Keyways

## Finished Straight Bores For Standard AGMA Class 1 Clearance Fit

## Finished Straight Bores For Standard AGMA Interference Fit

Nominal Shaft Diameter	Bore Diameter	Keyway (Width x Depth)	Keyway Radius
1/2	.500 / .501	1/8 x 1/16	1/64
9/16	.5625 / .5635		
5/8	.625 / .626	3/16 x 3/32	1/64
3/4	.750 / .751		
13/16	.8125 / .8135		
7/8	.875 / .876		
15/16	.9375 / .9385	1/4 x 1/8	1/64
1	1.000 / 1.001		
1-1/16	1.0625 / 1.0635		
1-1/8	1.125 / 1.126		
1-3/16	1.1875 / 1.1885		
1-1/4	1.250 / 1.251		
1-5/16	1.3125 / 1.3135	5/16 x 5/32	1/32
1-3/8	1.375 / 1.376		
1-7/16	1.4375 / 1.4385	3/8 x 3/16	1/32
1-1/2	1.500 / 1.501		
1-5/8	1.625 / 1.626		
1-11/16	1.6875 / 1.6885		
1-3/4	1.750 / 1.751		
1-7/8	1.875 / 1.876	1/2 x 1/4	1/32
1-15/16	1.9375 / 1.9385		
2	2.000 / 2.001		
2-1/8	2.125 / 2.126		
2-3/16	2.1875 / 2.189		
2-1/4	2.250 / 2.2515		
2-3/8	2.375 / 2.3765	5/8 x 5/16	1/16
2-7/16	2.4375 / 2.439		
2-1/2	2.500 / 2.5015		
2-5/8	2.625 / 2.6265		
2-3/4	2.750 / 2.7515		
2-7/8	2.875 / 2.8765	3/4 x 3/8	1/16
2-15/16	2.9375 / 2.939		
3	3.000 / 3.0015		
3-1/8	3.125 / 3.1265		
3-3/16	3.1875 / 3.189		
3-1/4	3.250 / 3.2515		
3-3/8	3.375 / 3.3765	7/8 x 7/16	1/16
3-7/16	3.4375 / 3.439		
3-1/2	3.500 / 3.5015		
3-5/8	3.625 / 3.6265		
3-3/4	3.750 / 3.7515		
3-7/8	3.875 / 3.8765	1 x 1/2	1/16
4	4.000 / 4.0015		
4-1/4	4.250 / 4.2515		
4-3/8	4.375 / 4.377		
4-1/2	4.500 / 4.502		
4-3/4	4.750 / 4.752	1-1/4 x 5/8	1/8
5	5.000 / 5.002		
5-1/4	5.250 / 5.252		
5-3/8	5.375 / 5.377		

Nominal Shaft Diameter Over to Including	Bore Dia. Equals Nominal Shaft Diameter minus	Bore Tolerance	Keyway (Width x Depth)	Keyway Radius
9/16 to 7/8	.001	+.0005	3/16 x 3/32	1/64
7/8 to 1-1/4	.001	+.0005	1/4 x 1/8	1/64
1-1/4 to 1-3/8	.001	+.0005	5/16 x 5/32	1/32
1-3/8 to 1-1/2	.001	+.0005	3/8 x 3/16	1/32
1-1/2 to 1-3/4	.002	+.001		
1-3/4 to 2-1/4	.002	+.001	1/2 x 1/4	1/32
2-1/4 to 2-3/4	.002	+.001	5/8 x 5/16	1/16
2-3/4 to 3	.002	+.001	3/4 x 3/8	1/16
3 to 3-1/4	.003	+.0015		
3-1/4 to 3-3/4	.003	+.0015	7/8 x 7/16	1/16
3-3/4 to 4	.003	+.0015	1 x 1/2	1/16
4 to 4-1/2	.0035	+.0015		
4-1/2 to 5	.0035	+.0015	1-1/4 x 5/8	1/8
5 to 5-1/2	.004	+.0015		
5-1/2 to 6	.004	+.0015	1-1/2 x 3/4	1/8
6 to 6-1/2	.005	+.002		
6-1/2 to 7	.005	+.002	1-3/4 x 3/4	1/8
7 to 7-1/2	.0055	+.002		
7-1/2 to 8	.0055	+.002	2 x 3/4	1/8
8 to 9	.006	+.002		
9 to 10	.0065	+.002	2-1/2 x 7/8	1/8
10 to 11	.0075	+.002		
11 to 12	.008	+.002	3 x 1	3/16
12 to 13	.009	+.0025		
13 to 14	.0095	+.0025	3-1/2 x 1-1/4	3/16
14 to 15	.010	+.0025		
15 to 16	.0105	+.0025	4 x 1-1/2	(Note 3)
16 to 17	.011	+.0025		
17 to 18	.0115	+.0025		
18 to 19	.012	+.0025	5 x 1-3/4	(Note 3)
19 to 20	.0125	+.0025		

### Set Screw Sizes For Clearance Fit Bores

Hub Size	A	B	Set Screw
6 S	1.19	.38	1/4"-20 UNC
8 S	1.41	.38	
10 S	1.56	.38	
1 F	1.69	.38	
12 S	1.78	.50	3/8"-16 UNC
1 1/2 F or 15 S	1.94	.38	
2 F or 20 S	2.44	.50	
2 1/2 F or 25 S	3.03	.63	
3 F or 30 S	3.59	.75	1/2"-13 UNC
3 1/2 F or 35 S	4.19	.88	5/8"-11 UNC
4 F or 40 S	4.75	1.63	
4 1/2 F or 45 S	5.31	1.63	3/4" 10 UNC
5 F	6.03	2.06	
5 1/2 F	6.63	2.38	



**Notes:**

- 1) Unless specified by the customer:
  - Series S couplings supplied with clearance fit bores with set screws.
  - Series F couplings supplied with interference fit bores without set screws over the keyways.
  - Series EL couplings supplied with clearance fit bores with set screws.
- 2) Actual shaft fit will vary depending on actual shaft diameters.

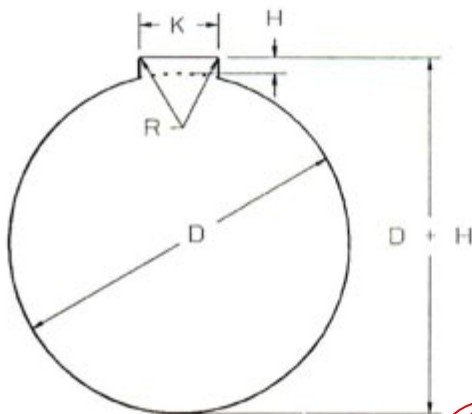
- 3) Keyway fillet radius to be specified by customer.
- 4) All dimensions per AGMA 9002-A86 commercial standards. Non standard bores and keyways available upon request.

**INDUSTRIAL MAGZA**  
 DIST. AUTORIZADO  
 MEX (55) 53 63 23 31  
 QRO (442) 1 95 72 60  
 MTY (81) 83 54 10 18  
 ventas@industrialmagza.com

**SYSTEM COMPONENTS, INC.**  
 1635 Steve Drive  
 South Haven, Michigan 49090  
 Phone 616-637-2191 FAX 616-637-8377

# Standard Metric Bores And Keyways

Bore Dia. (D) Over To/Incl.	Bore Tol.	Keyway		Fillet Radius (R)	Key Size (Ref)
		Width (K)	Depth (H)		
6 8	+ .015 -.000	2 -.006 3 -.031	1.0 1.4	.08 +.08 -.00	2 x 2 3 x 3
8 10					
10 12	+ .018 -.000	4	1.8 +.1 2.3 -.0	.16 +.09 -.00	4 x 4 5 x 5
12 17					
17 18		6 -.042	2.8		6 x 6
18 22	+ .021 -.000	6	2.8		6 x 6
22 30		8 -.015 10 -.051	3.3 3.3		8 x 7 10 x 8
30 38	+ .025 -.000				
38 44		12	3.3	.25 +.15 -.00	12 x 8
44 50		14 -.018 16 -.061	3.8 4.3		
50 58	+ .030 -.000	18	4.4		18 x 11
58 65					
65 75		20	4.9 +.2 5.4 -.0		20 x 12 22 x 14
75 80		22 -.022 22 -.074	5.4 5.4		
80 85	+ .035 -.000	25	5.4	.40 +.20 -.00	25 x 14
85 95			28		6.4
95 110		32	7.4		32 x 18
110 120		32	7.4		
120 130	+ .040 -.000	36 -.026 40 -.088	8.4 9.4		36 x 20 40 x 22
130 150					
150 170		45	10.4	.70 +.30 -.00	45 x 25
170 180		45	10.4		
180 200	+ .046 -.000	50	11.4		50 x 28
200 230		56	12.4		
230 250	+ .052 -.000	56	12.4 +.3 12.4 -.0	1.2 +.40 -.00	56 x 32
250 260			63 -.032 70 -.106		12.4 14.4
260 290		70	14.4		70 x 36
290 315		80	15.4		
315 330	+ .057 -.000	90	17.4	2.0 +.50 -.00	90 x 45
330 380		90	17.4		
380 400	+ .063 -.000	90	17.4		90 x 45
400 440			100		19.5



**Notes:**

1. Bore tolerances per BS 4500 H7 fit.
2. Keyway width tolerances per BS 4235 P9 fit.
3. Keyway depth and fillet radius per BS 4235.
4. All dimensions are in millimeters.
5. Actual shaft fit will vary depending on actual shaft diameters.



MEX (55) 53 63 23 31  
 QRO (442) 1 95 72 60  
 MTY (81) 83 54 10 18  
 ventas@industrialmagza.com



1635 Steves Drive  
 South Haven, Michigan 49090  
 Phone 616-637-2191 FAX 616-637-8377